



LION[®]

ready for action

FIRE BOOTS THAT DON'T STOP UNTIL YOU DO.

First responder footwear designed to maximize safety and comfort...for as long as the job takes.



STRUCTURAL FIRE BOOTS | EMS/WILDLAND BOOTS

STRUCTURAL FIRE BOOTS



**YOUR
CORPORATE
LADDER
IS HOTTER
THAN MOST.**

A rush job entails running 10-33 in response to an alarm. Getting a good client review means an emotional sob of thanks from the parent of a child you've just rescued. And a successful project might include saving thousands of acres of forest, or countless memories from a home.

Let's face it: the stakes at your job are higher than those of the average American worker.

And because your shift lasts 24 hours (and sometimes beyond), you need footwear to handle everything from fighting a fire to filling out paperwork to cleaning the station. You need footwear that you don't need to worry about.

That's a tall order. Thankfully, we can fill it.

LION-Thorogood has relentlessly focused on craftsmanship, innovation, and comfort, while recognizing the importance of footwear to your livelihood and getting the job done.



STRUCTURAL FIRE BOOTS

KnockDown Elite™ 14" Leather Boot

No matter how many times the alarm sounds during your shift, these black flame-resisting leather upper KnockDown boots go on with ease. Once your foot slides in, the ankle lock system holds you firmly in place until you use the handy heel kick plate to take them off. Our exclusive Vibram® Fire & Ice All-Terrain Sole provides exceptional traction on any surface; including pitched roofs and steep embankments. It stands up to the heat and will help keep a steady foot when fighting winter fires and the water turns to ice. The GORE® CROSSTECH® Moisture Barrier also repels dangerous fluids. Take a hit to the ankle thanks to the Poron® XRD® padding - the same impact protection used in motocross racing. Composite Safety Toe, Lenzi L-Protection® insole, and steel triple-rib ladder shank protect your foot from impact and the strain of working on ladders. And because you might be on your feet for hours, the dual-density removable insole molds to the shape of your foot to keep you comfortable until you're back at the station.

- GORE® CROSSTECH® triple-layer moisture barrier protects against blood-borne pathogens
- Waterproof, flame-resisting leather upper with abrasion-resisting rubber toe and heel protection.
- Removable dual-density polyurethane insole
- Lenzi L-Protection® flexible, non-metallic, puncture-resisting insole
- Steel triple-rib ladder shank
- Exclusive Vibram® ATS sole with Fire & Ice technology
- Cement construction
- CSA Z195-14 Edition-7



LEATHER STRUCTURAL BOOTS

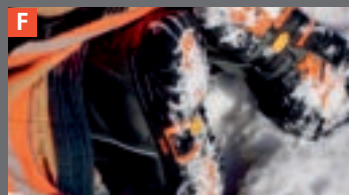
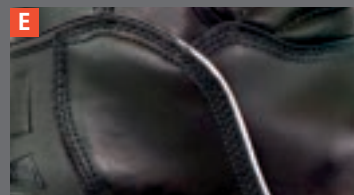
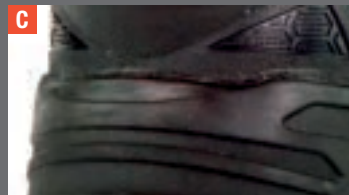
| STYLE # | SLIP-RESISTING | WATERPROOF | PUNCTURE-RESISTING | BLOOD-BORNE PATHOGENS | EH/SD | TOE PROTECTION | STRUCTURAL & HAZMAT | SIZES: | N | M | W | XW |
|----------|----------------|------------|--------------------|-----------------------|-------|----------------|---------------------|----------------|------|------|------|------|
| 804-6389 | ✓ | 💧 | ✓ | 🩸 | EH | Comp [75] | ✓ | MEN'S | | 5-16 | 5-16 | 5-16 |
| 504-6389 | ✓ | 💧 | ✓ | 🩸 | EH | Comp [75] | ✓ | WOMEN'S | 5-10 | 5-10 | 5-10 | |

TECHNICAL FEATURES

Structural
CERTIFIED
NFPA 1970

Hazmat
CERTIFIED
NFPA 1990

CSA
CERTIFIED
CSA Z195-14



- A. Air Venting System
- B. GORE CROSSTECH Water-Proof, Breathable Membrane
- C. Easy-Dooff Heel Kick Plate
- D. Non-Metallic Composite Safety Toe
- E. Poron XRD Ankle Lock System and Ankle Protection
- F. All-Terrain Sole and Side Wall Lugs



CALL 1.800.421.2926

STRUCTURAL FIRE BOOTS

LEATHER STRUCTURAL BOOTS



STRUCTURAL FIRE BOOTS

QR14™ 14" Structural Leather Boot



LION-Thorgood's QR14 bunker boots are built for comfort, durability and safety. The flex gussets allow the boot to move with you. 3M™ Scotchlite Hi-Vis piping in these waterproof, flame- and cut-resisting leather bunker boots creates a high-visibility look when exposed to direct light. The aggressive, slip-resisting outsole with 90 degree heel and ladder grips provide exceptional traction on any surface. GORE® CROSSTECH® triple layer moisture barrier is the toughest in the industry, delivering rugged, long-lasting protection that exceeds the requirements of the NFPA 1970 standard. The composite safety toe, Lenzi L-Protection® insole, and steel triple-rib ladder shank protects your foot from impact, puncture, and the strain of working on ladders. Extra padding in the shin and ankle protects you from ladder rungs and other impacts. Slip-resistant in all conditions and heat-resistant when the going gets hot, these all-weather boots don't quit until you do.



- GORE® CROSSTECH® triple-layer moisture barrier protects against blood-borne pathogens
- Waterproof, flame- and cut-resisting leather upper with abrasion-resisting rubber toe
- Steel Triple-Rib Ladder Shank
- Proprietary Traction Flex outsole
- Cement Construction
- CSA Z195-14 Edition-7



CROSSTECH®
PRODUCT TECHNOLOGY



Scotchlite™
Reflective Material



SOLE 3

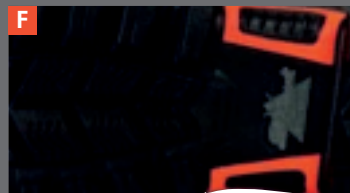
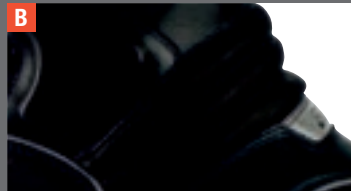


| STYLE # | SLIP-RESISTING | WATERPROOF | PUNCTURE-RESISTING | BLOOD-BORNE PATHOGENS | EH/SD | TOE PROTECTION | STRUCTURAL & HAZMAT | SIZES: | N | M | W | XW |
|----------|----------------|------------|--------------------|-----------------------|-------|----------------|---------------------|----------------|------|------|------|------|
| 804-6369 | ✓ | 💧 | ✓ | 🩸 | EH | Comp [75] | ✓ | MEN'S | | 5-16 | 5-16 | 5-16 |
| 504-6369 | ✓ | 💧 | ✓ | 🩸 | EH | Comp [75] | ✓ | WOMEN'S | 5-10 | 5-10 | 5-10 | |

TECHNICAL FEATURES

Structural
CERTIFIED
NFPA 1970

CSA
CERTIFIED
CSAZ195



- GORE CROSSTECH Triple-Layer Moisture Barrier
- Powerflex Gussets
- 3M Scotchlite™ Reflective Material
- Lightweight, Composite Safety Toe
- Ankle and Shin Pads
- Lenzi L-Protection



CALL 1.800.421.2926

LEATHER STRUCTURAL BOOTS

STRUCTURAL FIRE BOOTS

LEATHER STRUCTURAL BOOTS



V-Force® USA Leather Structural Boot

GORE-TEX® Non-PFAS CROSSTECH® triple-layer moisture barrier protects against blood-borne pathogens. Waterproof, flame-resisting leather/Armor AP™ upper with abrasion-resisting rubber toe and heel protection. Removable, superior cushioned, contoured, dual-density polyurethane insole for enhanced arch support. Lenzi L-PROTECTION® flexible, non-metallic, puncture-resisting insole. Steel triple-rib ladder shank. Exclusive lightweight Vibram® ATS sole with FIRE & ICE technology and cement construction.

- 14" Leather Structural Boot
- GORE-TEX® CROSSTECH® Moisture Barrier
- LENZI® L-Protections Midsole
- 3M™ Piping & "V" Trim
- Composite Toe
- 1" Wide Leather-Reinforced NOMEX® Pull Handle
- LION Exclusive Vibram® Outsole
- Available in mens & womens sizes



CROSSTECH®
PRODUCT TECHNOLOGY



Scotchlite™
Reflective Material HI-VIS

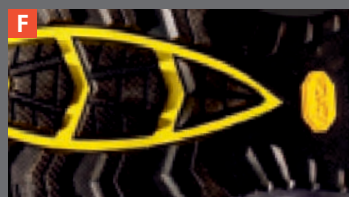
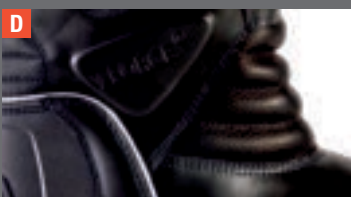
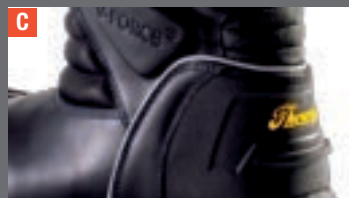
SOLE 1



| STYLE # | SLIP-RESISTING | WATERPROOF | PUNCTURE-RESISTING | BLOOD-BORNE PATHOGENS | EH/SD | TOE PROTECTION | WILDLAND | SIZES: | N | M | W | XW |
|----------|----------------|------------|--------------------|-----------------------|-------|----------------|----------|----------------|------|------|------|------|
| 804-6301 | ✓ | 💧 | ✓ | 🩸 | EH | Comp [75] | ✓ | MEN'S | | 5-16 | 5-16 | 5-16 |
| 504-6301 | ✓ | 💧 | ✓ | 🩸 | EH | Comp [75] | ✓ | WOMEN'S | 5-10 | 5-10 | 5-10 | |

TECHNICAL FEATURES

Structural
CERTIFIED
NFPA 1970



- Leather pull handles and hidden interior stitching
- 3M™ Scotchlite™ Reflective Piping & Trim
- Heel Kick Plate
- V-Fit Flex Gussets
- Lightweight, Composite Safety Toe
- Exclusive Vibram® Fire & Ice Outsole



DOWN TO THE SOLE



SOLE AND SIZING DETAILS

KEY

- A** = BEST
- B** = BETTER
- C** = GOOD



FIRE SOLES

| SOLE 1 | SOLE 2 | SOLE 3 | SOLE 4 | SOLE 5 |
|--------|--------|--------|--------|--------|
|--------|--------|--------|--------|--------|



LION EXCLUSIVE VIBRAM® OUTSOLE

TRACTION FLEX SOLE

TRACTION FLEX SOLE

EXCLUSIVE VIBRAM® CHISELED EDGE FIRE & ICE SOLE

HELLFIRE™ TRACTION LUG

| | | | | | |
|----------------------------|---|---|---|---|---|
| Abrasion Resistance | A | A | A | A | A |
| Oil Resistance | A | A | A | C | A |
| Heat Resistance | A | A | A | A | A |
| Chip Resistance | A | A | A | A | A |
| Slip Resistance | A | A | A | A | A |



For Women's size, order Men's size below it on chart. (example: Women's 8, order Men's 6)

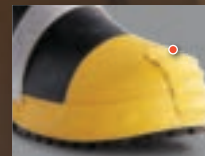
| | | | | | | | | | | | | | | | | | | | | | | |
|---------|---|-------|---|-------|---|-------|---|-------|---|-------|----|--------|----|--------|----|--------|----|--------|----|----|----|----|
| Women's | 5 | 5 1/2 | 6 | 6 1/2 | 7 | 7 1/2 | 8 | 8 1/2 | 9 | 9 1/2 | 10 | 10 1/2 | 11 | 11 1/2 | 12 | | | | | | | |
| Men's | 3 | 3 1/2 | 4 | 4 1/2 | 5 | 5 1/2 | 6 | 6 1/2 | 7 | 7 1/2 | 8 | 8 1/2 | 9 | 9 1/2 | 10 | 10 1/2 | 11 | 11 1/2 | 12 | 13 | 14 | 15 |



CALL 1.800.421.2926

STRUCTURAL FIRE BOOTS

RUBBER STRUCTURAL BOOTS



T-TOE TO ALLOW GREATER TRACTION WHEN CRAWLING OR CLIMBING



REFLECTIVE ELEMENTS OVER THE INSTEP AND HEEL

AVAILABLE IN
**WHOLE & HALF
SIZES** IN
THREE WIDTHS

TO ENSURE PROPER
FIT & COMFORT



STRUCTURAL FIRE BOOTS



HellFire™ Kevlar® Insulated Rubber Boot

Enjoy superior protection and comfort while fighting fires in these Kevlar® lined rubber insulated structural bunker boots with a flame- and heat-resisting lug outsole. A stainless steel puncture-resisting bottom plate provides a barrier between your feet and whatever you have to walk over to contain the fire. Experience added safety and comfort in the form of an oversized steel toe and a Kevlar yellow knit one piece liner five times stronger than steel. Work on ladders or crawl over debris without discomfort thanks to the cushioned shin guards. Vulcanized construction guarantees a durable, shock-absorbing fit that won't melt or degrade in extreme heat or cold. Removable superknit-covered polyurethane insole absorbs shocks so you can stand against the flames in these NFPA boots for as long as it takes to get the job done.

- Flame/heat-resisting rubber
- Removable Superknit covered, polyurethane footbed
- Steel Triple-Rib Ladder shank
- Stainless steel puncture-resisting bottom plate
- Hellfire traction lug sole
- Abrasion-resisting rubber T-toe
- Vulcanized construction



SOLE 5



Available in whole and half sizes in 3 widths to ensure proper fit and comfort.

| STYLE # | SLIP-RESISTING | WATERPROOF | PUNCTURE-RESISTING | BLOOD-BORNE PATHOGENS | EH/SD | TOE PROTECTION | STRUCTURAL & HAZMAT | SIZES: | N | M | W | XW |
|----------|----------------|------------|--------------------|-----------------------|-------|----------------|---------------------|----------------|--------------|--------------|--------------|--------------|
| 807-6000 | ✓ | 💧 | ✓ | 🩸 | EH | Steel [75] | ✓ | MEN'S | 5-14, 15, 16 | 5-14, 15, 16 | 5-14, 15, 16 | 5-14, 15, 16 |
| 507-6000 | ✓ | 💧 | ✓ | 🩸 | EH | Steel [75] | ✓ | WOMEN'S | 5-10 | 5-10 | 5-10 | |



HellFire™ Felt Insulated Rubber Boot

Enjoy superior protection and grip while fighting fires in these flame- and heat-resisting rubber light insulated structural bunker boots with lug sole. The stainless steel, puncture-resisting bottom plate provides a barrier between your feet and whatever you have to walk over to contain the fire. Experience added safety in the form of an oversized steel toe. The 3.5mm polyester needed felt liner with heel reinforcement cradles your foot while your body fights the flames. Work on ladders without discomfort thanks to cushioned shin guards. Vulcanized construction guarantees a durable, shock-absorbing fit that won't melt or degrade in extreme heat or cold. Removable superknit-covered polyurethane insole absorbs shocks so you can stand against the flames in these NFPA boots for as long as it takes to contain the blaze.

- Flame/heat-resisting rubber
- Waterproof
- Removable Superknit covered, polyurethane footbed
- Steel Triple-Rib Ladder shank
- Stainless steel puncture-resisting bottom plate
- HellFire traction lug sole
- Abrasion-resisting rubber T-toe
- Vulcanized construction
- CSA Z195-14 Edition-7



SOLE 5



Available in whole and half sizes in 3 widths to ensure proper fit and comfort.

| STYLE # | SLIP-RESISTING | WATERPROOF | PUNCTURE-RESISTING | BLOOD-BORNE PATHOGENS | EH/SD | TOE PROTECTION | STRUCTURAL & HAZMAT | SIZES: | N | M | W | XW |
|----------|----------------|------------|--------------------|-----------------------|-------|----------------|---------------------|----------------|----------|----------|----------|----------|
| 807-6003 | ✓ | 💧 | ✓ | 🩸 | EH | Steel [75] | ✓ | MEN'S | 5-15, 16 | 5-15, 16 | 5-15, 16 | 5-15, 16 |
| 507-6003 | ✓ | 💧 | ✓ | 🩸 | EH | Steel [75] | ✓ | WOMEN'S | 5-10 | 5-10 | 5-10 | |



CALL 1.800.421.2926

RUBBER STRUCTURAL BOOTS

EMS/WILDLAND BOOTS

LEATHER EMS/WILDLAND BOOTS



VISIT [LIONPROTECTS.COM/BOOTS](https://www.lionprotects.com/boots)



EMS/WILDLAND BOOTS



Station 1™ 9" Leather Boot

These hard-working boots never clock-out, even if your shift turns into a double. Our exclusive Vibram® ATS (All-Terrain Sole) provides exceptional traction on any surface. GORE® CROSSTECH® triple layer moisture barrier is the toughest in the industry. Safety features include a flexible Lenzi L-Protection puncture-resistant insole, triple-rib ladder shank and composite safety toe. These station boots are certified to meet EMS and Wildland Firefighting standards for the person who has to be prepared for everything.

- GORE® CROSSTECH® Waterproof Lining
- Full-Grain, Flame/Cut-Resisting Leather
- Steel Triple-Rib Ladder Shank
- Exclusive Vibram® ATS Outsole
- Cement Construction

Not designed for NFPA 1970 structural fire fighting.



LEATHER EMS/WILDLAND BOOTS

| STYLE # | SLIP-RESISTING | WATERPROOF | PUNCTURE-RESISTING | BLOOD-BORNE PATHOGENS | EH/SD | TOE PROTECTION | WILDLAND | SIZES: | N | M | W | XW |
|----------|----------------|------------|--------------------|-----------------------|-------|----------------|----------|----------------|--------------|--------------|--------------|----|
| 804-6379 | ✓ | 💧 | ✓ | 🩸 | EH | Comp [75] | ✓ | MEN'S | 5-14, 15, 16 | 5-14, 15, 16 | 5-14, 15, 16 | |
| 504-6379 | ✓ | 💧 | ✓ | 🩸 | EH | Comp [75] | ✓ | WOMEN'S | 5-10 | 5-10 | 5-10 | |

VENTILATED COLLAR WITH CLIMATE CONTROL
allows the boot to breathe

AGGRESSIVE, SLIP-RESISTING VIBRAM® FIRE & ICE ATS OUTSOLE WITH LADDER GRIPS
keeps your feet firmly planted in any conditions

REPLACEMENT ZIPPER:
884-6641 | SIZES: 5-10½
884-6642 | SIZES: 11-15

GORE CROSSTECH TRIPLE-LAYER WATERPROOF LINING
is blood-borne pathogen resistant

LIGHTWEIGHT COMPOSITE SAFETY TOE
provides added protection



CALL 1.800.421.2926





7200 POE AVENUE, SUITE 400
DAYTON, OHIO 45414 | 800.421.2926
www.lionprotects.com

GET SOCIAL WITH US:



©2026 Lion Group, Inc. All rights reserved. Thorogood is a registered trademark of Weinbrenner Shoe Company, Inc. 3M and Scotchlite are trademarks of 3M company. The DuPont oval logo, DuPont, and Kevlar are trademarks or registered trademarks of E.I du Pont de Nemours and Company or its affiliates. GORE CROSSTECH and GORE are registered trademarks of W.L. Gore and Associates, Inc. StedAir is a registered trademark of Stedfast, Inc. The yellow octagonal label and Fire and Ice are the registered trademarks of Vibram S.p.A. of Italy. Lenzi is a registered trademark of Lenzi Egisto S.p.A.