



LION[®]

ready for action

HANDS-ON WORKPLACE FIRE SAFETY TRAINING

Digital Fire, Live Fire & Clean Smoke



FLEXIBLE, REPEATABLE & COST-EFFECTIVE SOLUTIONS



At LION, we were convinced there was a more efficient and effective way to conduct fire extinguisher and safety training.

We set out to create firefighter training and public education tools that alleviated the problems many had often experienced — setting up for training was costly and time consuming, and clean up was equally frustrating. We sought to make products that provided safe, hands-on training that resembled true-to-life situations as closely as possible.

At LION, we understand the importance of training and we are committed to properly preparing trainees for the real thing. We understand that realism during training exercises helps prepare trainees for when it really matters.

Since the development of our first fire extinguisher training system, we have committed ourselves to utilizing smart technology and high quality, durable construction in product design and implementation. This passion has led us to develop the world's most advanced fire safety and emergency training products.

LION is a culture of innovation with a commitment to enhancing first responder readiness. We are the world's largest provider of fire and safety training tools and full-scale, multidisciplinary firefighter training complexes. We offer the most complete array of highly differentiated products and services to ensure that first responders are truly ready for action.

At LION, our primary driver is the passion our customers have for the critical roles they play in keeping citizens, workers, and firefighters safe through good training. We share this passion and have made it our mission to provide *the best training tools possible* to help our clients achieve their training goals.





// CONTENTS

LIVE FIRE TRAINING PROPS

I.T.S.™ Extinguisher Training System	7
Intelligent Training System™ (I.T.S.) Accessories.....	8



MAGNUM Hose Line & Fire Extinguisher Training System	10
--	----



DIGITAL FIRE TRAINING PROPS

BullsEye™ Extinguisher Training System	13
R.A.C.E. Station	14



HAZMAT

GasTrainer™ Gas Detection Training System	17
---	----

FIRE SAFETY EDUCATION TOOLS

Fire Safety Trailers.....	18
---------------------------	----



SMARTDUMMY MANIKINS

Rescue.....	20
Extraction	20

SMOKE GENERATION

SG1000™ Smoke Generator.....	22
SG4000™ Smoke Generator.....	25



HOSELINE TRAINING SYSTEM

.....	26
-------	----







Through the use of innovative, patented technology, the Intelligent Training System (I.T.S.) provides clean, safe and cost effective extinguisher training. The Intelligent Training System senses where the trainee aims and sweeps the SmartExtinguisher® laser-driven training extinguisher and varies the flames automatically, putting the fire out only when the proper technique is used. The SmartExtinguishers are recharged quickly and easily with only compressed air and water.

Intelligent Training System Features

> CLEAN

Eliminates the discharge of any dry-chemical or CO₂. I.T.S. utilizes clean burning propane.

> SAFE

Has sensors that automatically shut off the flames if the system is bumped, knocked or set up improperly. Flames go out instantly when the safety switch is released.

> EFFECTIVE

Provides a realistic and engaging training experience.

Intelligent Training System Advantages

- Safely train to OSHA requirements.
- Makes training easy and reduces costs significantly with LION rechargeable training extinguishers.
- Grades users, making it easy to monitor improvement and proficiency. Trains more people more effectively in less time.



> I.T.S. handheld controller



> Clean burning propane

"When you combine ease of use, quick set-up and tear-down, training time and safety of this training system, there is nothing out there comparable."

GEORGE OSTROM

Safety Assistant Albany Molecular Research, Inc.





**"Your products
have enabled us to
make substantial
improvements to our
campus fire safety
training program."**
JONATHAN STONE
*Occupational Safety and
Emergency Response
Specialist / Michigan
Technological University*



// I.T.S.™ ACCESSORIES

I.T.S. flame response system determines where the trainee is aiming and sweeping the SmartExtinguisher® and automatically varies the flames in response, providing a realistic and safe training experience. With intelligent props and multiple class of fire and difficulty settings, it is possible to provide countless training scenarios without the cost and cleanup associated with dry-chemical or CO₂ extinguishers. Propane-fed flames, intelligent props, as well as class of fire and difficulty level settings make I.T.S. the world's most advanced live fire extinguisher training system.

Class A, B or C fires can be selected at four different difficulty levels and props can be used to create realistic flame patterns, further enhancing the training experience.

I.T.S. Features

> ENHANCED FLAME

The I.T.S. training system generates larger, more intense flames, allowing trainees to really feel the heat, enhancing the realism of the training experience.

> FLARE-UP FEATURE

The I.T.S. training system has a flare-up button which can be pressed to reignite the flames at any time to further challenge trainees.

> PROP ENABLED

Stainless steel props can be used with the I.T.S. Xtreme training system to simulate different fire scenarios. Optional trash can (Class A), stove top (Class B), paint locker (Class B) and motor (Class C) props are available.

I.T.S. Advantages

- Safely train to OSHA requirements.
- Makes training easy and reduces costs significantly with the LION rechargeable training extinguishers.
- Grades users making it easy to monitor improvement and proficiency.

ACCESSORIES



> Trash Can Prop



> Motor Prop



> Paint Locker Prop



// MAGNUM™

HOSE LINE &
FIRE EXTINGUISHER
TRAINING SYSTEM



2.8 MILLION BTU AND SMART CONTROLS FOR ENHANCED FIRE TRAINING

Can your trainees handle the MAGNUM Fire Training System? With an output of 2.8 million BTU, your trainees feel the heat of MAGNUM'S intense flames for full scale hands-on training. MAGNUM is designed to handle a hose line, fire extinguisher, or virtually anything in your fire arsenal. Reinforced construction and rugged components allow you to run evolution

after evolution of advanced fire extinguisher and hose line training. Training this intense has never been so simple. Built-in wheels and easy set up allow you to quickly create challenging training scenarios that are endlessly repeatable. Smart Controls shut down the propane and auto-ignition only if the fire is knocked out completely for accurate and





MAGNUM IS TOUGH ENOUGH TO HANDLE A HOSE LINE — SMART ENOUGH TO BE A LION PRODUCT

comprehensive training. Stainless steel props can be used with MAGNUM to simulate different fire scenarios. Available props include a computer monitor prop, an electric motor prop and a trash can prop.

"I am pleased to say that it has delivered all that it was advertised to do... with the system nearly paying for itself the very first year!"

JAMIE DUKE

Senior Health and Safety Specialist // Valero Wilmington Refinery





"We purchased the BullsEye Digital Fire Training System a few months ago and thoroughly believe it is one of the best investments for safety education that our company has made."

DYLAN HAYES

Disaster Response Manager // Seattle Children's Hospital



BullsEye uses advanced laser technology to simulate the discharge of an actual extinguisher for a completely clean, safe and effective training experience. BullsEye senses where the user aims and sweeps a laser training extinguisher and automatically varies the LED driven digital flames in response. Your trainees learn how to effectively use a fire extinguisher in a real world environment. Training can now take place completely indoors — from the conference room to the production floor.

BullsEye Features

> CLEAN

The BullsEye extinguisher uses a conical laser to replicate discharge rather than depending on an actual extinguisher. For training variation, the BullsEye system can also be used with the standard air/water SmartExtinguisher.®

> SAFE

Relies on LED driven digital flames and a laser extinguisher for a completely safe training experience.

> EFFECTIVE

Provides an engaging training experience. Hundreds of trainees can be trained in a single day without recharging any extinguishers. The BullsEye senses how far away the trainee is from the fire and what class of extinguisher they are using. The flames will only respond if the training is using the proper extinguisher and technique, allowing trainees to build muscle memory and all the skills necessary to stop incipient stage fires.

> REALISTIC

BullsEye extinguishers have sound effects, a timed discharge and are weighted accordingly (5, 10 or 20 lb.) to closely simulate actual extinguishers. The self-generating flames mimic the sight and sound of real class A, B and C fires. Smoke generation is tied to the size of the fire to add even more realism to the scenario.

BullsEye Advantages

- Safely train to OSHA requirements.
- Eliminates time consuming set up and clean up.
- Allows training to take place entirely indoors, in the actual work environment.
- Grades users, making it easy to monitor improvement and proficiency. Training data can be easily exported to a USB for making certificates of completion and sharing records.



The R.A.C.E. Station expands your training beyond basic fire extinguisher training by incorporating all the elements of response to a fire. The R.A.C.E. Station includes a pull station, strobe light, smoke detector, annunciator, and an interactive 9-1-1 phone that allow your students to practice emergency response from start to finish. Reinforce the R.A.C.E. method (Rescue, Alert, Confine, Extinguish) and enable your students to make good decisions in an emergency based on their observations.

The R.A.C.E. Station recreates the stressful environment of an actual emergency. Trainees see simulated flames and the strobe light flash, hear the horn and fire sounds, and see the training smoke. Upon discovery of a simulated fire, trainees can put R.A.C.E. to the test by alerting with the emergency phone and/or pull station before attempting to extinguish the fire. When faced with a number of decisions to make before the fire grows out of control, R.A.C.E. training helps them respond quickly and accurately.

How it Works

The R.A.C.E. Station communicates wirelessly with the BullsEye™ Digital Fire Extinguisher Training System for a seamless training experience. Using the tablet control, the system records if the trainee responds using the correct R.A.C.E. method and how long it takes them to complete each step. Customize training scenarios to your location's specific response plan. The R.A.C.E. Station can also be used with other LION training tools or as a standalone unit.

Training Opportunities

The R.A.C.E. Station is ideal for training anywhere a real fire emergency may occur. Challenge your trainees to locate the nearest extinguisher by placing the R.A.C.E. Station in that location. Train in a variety of places and easily change the location of the R.A.C.E. Station between evolutions. Teach students both how to respond to emergencies at work and at home by using the smoke detector and interactive emergency phone. When used in conjunction with the BullsEye, trainees can learn how to extinguish class A, B, and C fires using a wide range of extinguisher types.

Features/Benefits

> REALISTIC

By including sound, smoke and training extinguishers, trainees will be exposed to the same conditions they will face in a real fire emergency.

> EFFECTIVE

Hands-on training teaches muscle memory that will allow trainees to respond and make decisions quickly during a real emergency.

> COMPREHENSIVE

Prepare your trainees with the tools they need to respond completely to an incipient stage fire from the moment they see it.

> TRANSPORTABLE

The R.A.C.E. Station is lightweight and designed to be transported easily between training locations. Set up the R.A.C.E. Station in your training location where the alarm and extinguisher are actually located.

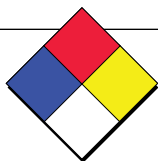


> Electric Cutoff Prop









// GAS TRAINER™

Conduct hands-on Gas Detector Training with GasTrainer™

GasTrainer uses GasSource emitters and sensor technology to simulate chemical and explosive gas emission sources. The rugged handheld meter reads the electronic emissions of four different “gases”, with customizable alarm levels and intensity settings.

GasTrainer allows for comprehensive gas monitoring and response training for both fire service professionals and safety personnel. Simulated gas sources can be set up in work areas, chemical storage facilities, and near HVAC equipment where HazMat dangers can actually exist. Students learn how different gases behave, how to locate emission sources, and how to establish safety perimeters in the event of a hazardous situation. Using the hand held Instructor Unit, a trainer can set alarm levels, adjust the gas being monitored and even manually increase or decrease gas readings to provide additional training challenges.

Set the scene with the HazMat Placard Kit which includes a full set of DOT placards and the NFPA diamond. Expand your training with the HazardTank™ and Leaking Propane Tank compressed gas cylinder props that create an electronic hissing noise when the valves are opened.

“Our tactical officers were able to see a real response to the entrance of a simulated hazardous material in a confined area. We could not simulate the concentration of such a hazard prior to our acquisition of this tool.”

RICHARD SHOAF, SR.
VP Operations // Safety
Training and Consultations Int'l



▲ GasTrainer Instructor Unit and Student Unit



▼ Leaking Propane Tank

▼ HazardTank

▼ HazMat Placard Kit

// FIRE SAFETY TRAILERS



FIRE PREVENTION EDUCATION — FOR THE WORKPLACE & FOR ALL AGES

Provide important fire safety lessons with the Interactive Industrial and HazMat fire safety props. Train employees with simulated fire situations that are intense and realistic yet completely safe.



KITCHEN FIRE SCENARIO

Designed to resemble a real home or break room, the kitchen fire scenario offers hands-on emergency response and hazard recognition training. Teach your employees how to recognize dangers in the home and stay safe. For more advanced training, interactive SmartProps create a fire emergency. The SmartProps are designed to appear as normal household appliances and accessories, but with one push of a button by the instructor, the simulated kitchen emergency escalates as smoke fills the kitchen and the heat from the “fire” rapidly intensifies. Laser-driven extinguishers that communicate with the props in real time provide hands-on fire safety lessons.



INDUSTRIAL ROOM FIRE SCENARIO

Teach occupational safety and response in the Industrial Room Fire Scenario using fire safety props including interchangeable HazMat placards, a chemical drum prop, leaking cylinder prop, lock-out tag-out station and smoking outlet prop. For emergency response training, a simulated sparking electrical panel ignites a parts washer creating a smoky Class B fire. Trainees can pull the fire alarm, secure the power and attempt to use a training extinguisher to put out the flames keeping their evacuation path in mind.



SEVERE WEATHER SCENARIO

Life-threatening weather emergencies can occur with little or no notice. The optional Severe Weather Package, an add-on to the Kitchen Fire Scenario, broadcasts realistic severe weather alerts and teaches the trainees how to react if faced with an extreme weather event. Weather simulations incorporate actual news broadcasts with surround-sound effects for hurricane, earthquake, flood, and tornado safety education. The LION Severe Weather Package teaches critical life-saving steps in a highly realistic training environment.



BEDROOM SCENARIO

In addition to workplace hazards, the Bedroom Scenario extends your training to include risks at the home. Prepare your employees to conduct E.D.I.T.H. (Exit Drills In The Home) drills at home with the bedroom scenario. Activate the heated door and watch smoke enter from under the door jamb. Show how to feel for heat and block the smoke with a pillow or towel and then evacuate to safety using the window and escape ladder. The bedroom scenario features an interactive 9-1-1 phone, an automatic smoke detector and a smoking outlet. Trainees can dial 9-1-1 and use a BullsEye laser extinguisher to put out the flames before the fire grows too large. The optional Interactive Bedroom Package adds a smoking air conditioner and trash can, sound and fire effects for added education and realism.



“Everyone that visits the trailer is amazed how realistic the fire and smoke simulations are. Adults love the fire extinguisher training in the kitchen and the children are learning so much about what to do if the woke up to their smoke detector sounding. I know that countless lives may be saved because of the use of this trailer.”

TIFFANY BRADBURY

Fire Prevention Specialist // Roanoke Fire-EMS



// SMARTDUMMY™ RESCUE AND EXTRACTION MANIKINS

INTERACTIVE
TRAINING MANIKIN

The SmartDummy™ Rescue and Extraction Manikins listen and call out for help

The Rescue Manikins are tough enough to take intense training and smart enough to interact with rescuers. Built with rugged, abrasion resistant materials, Rescue and Thomas can handle your toughest training requirements. Internal weighted padding and a flexible design provide uniform weight distribution and realistic feel. The interactive built-in VoiceBox gives your victim a voice and adds realism to the scenario. Record messages for continuous or sound activated playback. Rescue and Extraction manikins can cough, call out for help, or direct rescuers to find additional victims.

SMARTDUMMY RESCUE MANIKIN

The Rescue Manikin is constructed with crush-resistant materials, a rugged uni-shell covering and removable boots that can withstand a full range of intense training scenarios. The Rescue manikins internal weighted padding provides even weight distribution and feels like a real victim. Flexible joints enable a full range of mobility without pinch points. The programmable VoiceBox is located in the head for ease of access.

SMARTDUMMY EXTRACTION MANIKIN

Create victim removal scenarios with the Extraction Manikin. Simulate a variety of serious bodily injuries including torso impalement or a severed arm or leg. The built-in VoiceBox gives your victim a voice and adds interactivity to the scenario.





> Extraction Manikin leg and arm



> Torso impalement area



> Interactive VoiceBox

"When minutes and even seconds count in a rescue, the LION rescue manikin has to be the best piece of equipment to train with."

DAN JAQUITH

Training and Safety Officer // Chatfield Fire Department



◀ Extraction Rescue Manikin



// SG1000™

SMOKE GENERATOR

For training that's as real as it gets

LION Smoke Generators are known for withstanding the tough demands of firefighter training. Now, our range of generators has expanded to include a portable smoke generator that's ideal for workplace safety training. The SG1000 Smoke Generator allows training officers to easily add realism to important fire safety drills.

Expand your training capabilities to include realistic evacuation training, as well as hazard recognition and response training. Because the SG1000 is cordless and battery operated, it's ideal for training in locations where electrical power is not easily accessible or available.

The SG1000 produces smoke instantly at the touch of a button. Control the smoke density for light smoke during fire extinguisher training and denser smoke for more intense drills.

Training Opportunities

- Enhance fire response drills.
- Add visual cues to evacuation training.
- Use in conjunction with our BullsEye extinguisher training system for more realistic training.
- Add realism to hazmat training.
- Teach gas recognition and response.
- Conduct chemical spill and lab incident response training.
- Create realistic shelter in place drills and drills with non-ambulatory individuals in hospital and health care settings.





Features/Advantages

> PORTABLE

The SG1000 weighs only 17 pounds, making it light enough for single hand operation.

> CORDLESS

The SG1000's interchangeable battery allows instructors to add smoke to any training location where running power cords or a generator is inconvenient or impossible.

> ZERO HEAT-UP TIME

The SG1000 instantly heats smoke liquid to the ideal temperature. Simply press the button for instant smoke.

> EASY OPERATION

The SG1000 can be operated using just one button, and requires no configuration or programming. Users can customize smoke density and create smoke bursts or set the output to continuous run.

> LONG-LASTING BATTERY

The SG1000 can be run continuously for 20 minutes and much longer when using smoke intermittently, producing the same high quality smoke during the first and last minutes of training. The battery can be easily changed for uninterrupted training.



▲ SG1000

▼ SG4000

"This Smoke Generator keeps going and going! Once it has warmed up, it will generate smoke constantly until you turn it off — nice thick, dense, smoke that provides a realistic approach to fire training."

REGINALD D. FREEMAN

*MS, CFO Fire Chief // Lockheed Martin
Aeronautics*



// SMOKE GENERATORS

Smoke Generators for workplace safety training

LION Smoke Generators use smart controls to continuously produce the best smoke possible for fire safety and evacuation training. Built on steel chassis with all metal structural components, these smoke generators are built to handle the toughest training demands and stand the test of time. LION Smoke Liquid has been developed to produce a dense, thick smoke with an extended hang-time. Advanced sensors and controls enable LION Smoke Generators to produce a continuous supply of smoke without recharging or reheating.

Whether you are doing fire safety drills, evacuation training, or a more advanced fire training, LION Smoke Generators don't stop until your training is done.

Training Opportunities

- Provide employees with a realistic picture of how difficult evacuation during a fire can be.
- Add realism to your company's fire safety training.
- Quickly fill buildings with dense smoke for large area fire brigade drills.
- Create a zero visibility environment in seconds for advanced fire and search & rescue training.

> SG4000™ SMOKE GENERATOR

With built-in handles, steel chassis and rubberized feet, the SG4000 Smoke Generator is portable enough to be easily moved, but tough enough to handle the demands of intense training. Smart controls and an integrated smoke liquid tank enable the SG4000 Smoke Generator to produce smoke continuously for hours.



▲ Wireless remote control

// HOSELINE TRAINING SYSTEM



Intense flames, real heat and interchangeable props for effective training

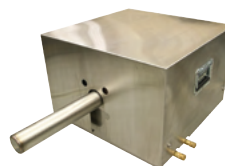


LION's Hoseline Training System and props are designed to provide realistic live fire training suited to your specific needs. By providing an array of interchangeable props that range from a small scale paint locker, stove fire or dumpster fire to a pressure vessel or vehicle fire training prop, we can help you meet your training goal, whatever it may be. All of our full-intensity training equipment is operated using the universal Pilot Module, meaning that you can easily customize and add to your selection of training props without excessive costs.

These interchangeable props offer full-intensity training scenarios with interactive features such as a functional burner valve on the Stove Fire Training Prop and operational lid on the Trash Bin Fire Training Prop. LION Modular Fire Training Props allow you to cost-effectively create additional scenarios to meet your specific training objectives.

LION Offers A Wide Range of Advanced Fire Training Props

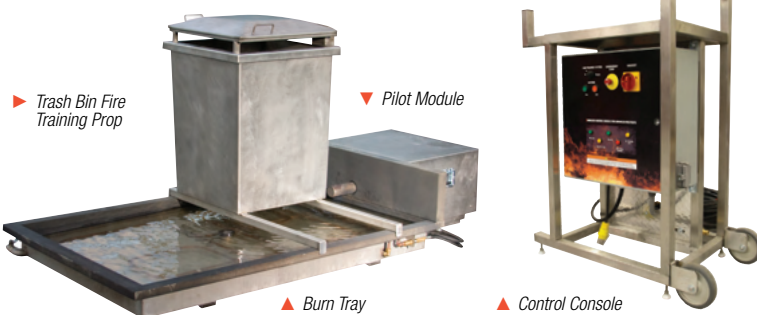
Though they vary in size and scope, the **Pilot Module** is at the heart of each. The stainless steel Pilot Module acts as the brain of the system and connects to the **Control Console**, which allows the instructor to safely stop and start evolutions. The Pilot Module also houses the forced air pilot system, which guarantees reliable ignition, even under the most demanding circumstances.



▲ Pilot Module

A variety of props connect directly to the Pilot Module, including the Pressure Vessel, Split Pipe Flange, Stove, Dumpster, Helicopter and Aircraft Wing Fire Training Props. The Pilot Module makes it easy for instructors to add additional props to their training arsenal over time to meet their evolving training objectives.

Another component of the Hoseline Training System is the **Burn Tray**. The Burn Tray, which allows for multiple burn zones and more intense flames, can be connected to the Pilot Module to expand training capabilities. Use the Burn Tray to simulate a fuel spill, or add larger props such as the Vehicle, Electric Motor and Pipe and Valve Assembly (Christmas Tree) Fire Training Props.



▶ Trash Bin Fire Training Prop

▼ Pilot Module

▲ Burn Tray

▲ Control Console

LION's Advanced Fire Training Props are made of the most robust and rugged materials and are designed to stand up to the most intense training. Props are easily interchanged for versatile and diverse training opportunities. Additional props can be added to your collection at any time, allowing instructors to easily refresh their training capabilities.



PRESSURE VESSEL FIRE TRAINING PROP

The Pressure Vessel Fire Training Prop is a portable training tool with intense flames, real heat and smart controls. Train employees to reduce the chance of a BLEVE with the built-in multiple zone burner system. With a functioning vapor service valve, advanced fire safety training can include the practice of approaching the tank while shielded by hose lines to secure the fuel and extinguish the fire.



SPLIT PIPE FLANGE FIRE TRAINING PROP

The Split Pipe Flange Fire Training Prop challenges trainees to use the proper firefighting techniques when faced with a leaking combustible fluid or vapor fire situation. The fire source can be extinguished by applying the right amount and type of agent, by turning off the "valve", or at any time by releasing the control dead man switch. The Split Pipe Flange Fire Training Prop is made of rugged stainless steel designed as a pipe, pipe joint and shut off valve.



7200 POE AVENUE, SUITE 400
DAYTON, OHIO 45414 | 800.421.2926
www.lionprotects.com

GET SOCIAL WITH US:



FACEBOOK facebook.com/lionconnects
INSTAGRAM instagram.com/lion_firegear
TWITTER twitter.com/lion_gear
PINTEREST pinterest.com/lionfiregear
YOUTUBE youtube.com/lionconnects

